



Coffee with Leadership  
ICP General Membership Meeting  
*including a presentation by School Administration*  
Thursday, November 16

# Welcome & Introductions

President and Treasurer - Avery Jones

Vice President - Lacey Townsend

Secretary - Katie Ledford

Lower School Liaison - Melissa Fox

Middle School Liaison - Elizabeth Mercurio

Upper School Liaison - Janice Guazzo

ICI Representative - Melissa Strong

Head of School - Jenn Townley

# Remarks by ICI School Board & Administration

Jenn Townley, Head of School  
Valerie Phillips, ICI Board Chair  
Mia Strauss, ICI Board Vice Chair  
Lorraine Carver, ICI Board Member

# What Makes ICI Unique?

An integrated approach to the whole child in a K-12 model by:

- ★ Valuing every member of our school community
- ★ Engaging all students in Core Curriculum, Spanish, Fine Arts, and Active Living
- ★ Encouraging students to become Leaders

# Journey of our School

**2014-2015:** 350 Students, first year of school, understaffed, but the founding team is synergistic, financially stable

**2015-2016:** 650 Students, expanded current space, tripled staff, permanent campus committee formed, financially stable

**2016-2017:** 760 Students, *academic growth exceeded*, finalized location for permanent campus, financially stable

**2017-2018:** 870 students, new 501(c)3 for community driven board, to be able to purchase land and build campus on own, financially stable

# What Do Banks Look For?

- ★ Strong leadership
- ★ Financially stable
- ★ Academic achievement
- ★ Steady enrollment with waitlists
- ★ 1-3 month's operating expenses in reserve

# Operating Cost for 1 month in new building

<i>Building Loan</i>	\$ 125,000
<i>Payroll</i>	750,000
<i>Operating Costs</i>	30,000
<b>Total</b>	<b>\$ 905,000</b>

# How is Financing for a Charter School Campus Different Than Traditional Public School Building Financing

- ★ No separate pot of money for capital expenses
- ★ Must use our regular operating budget to fund
- ★ Regular operating budget to fund all the equipment inside
- ★ Lease vs. owning
- ★ Budget for long-term repairs and maintenance



# Permanent Campus

## What are We Doing Now?

- ★ Conditional use permit amendment
- ★ Due diligence process on property purchase
- ★ Advantage Capital for Education partner
- ★ Efficient layout to meet our needs and budget
  - Wish list vs. reality
  - Short term vs. long term
- ★ Obtain building permits
- ★ Working through and evaluating financing options

# Timeline?

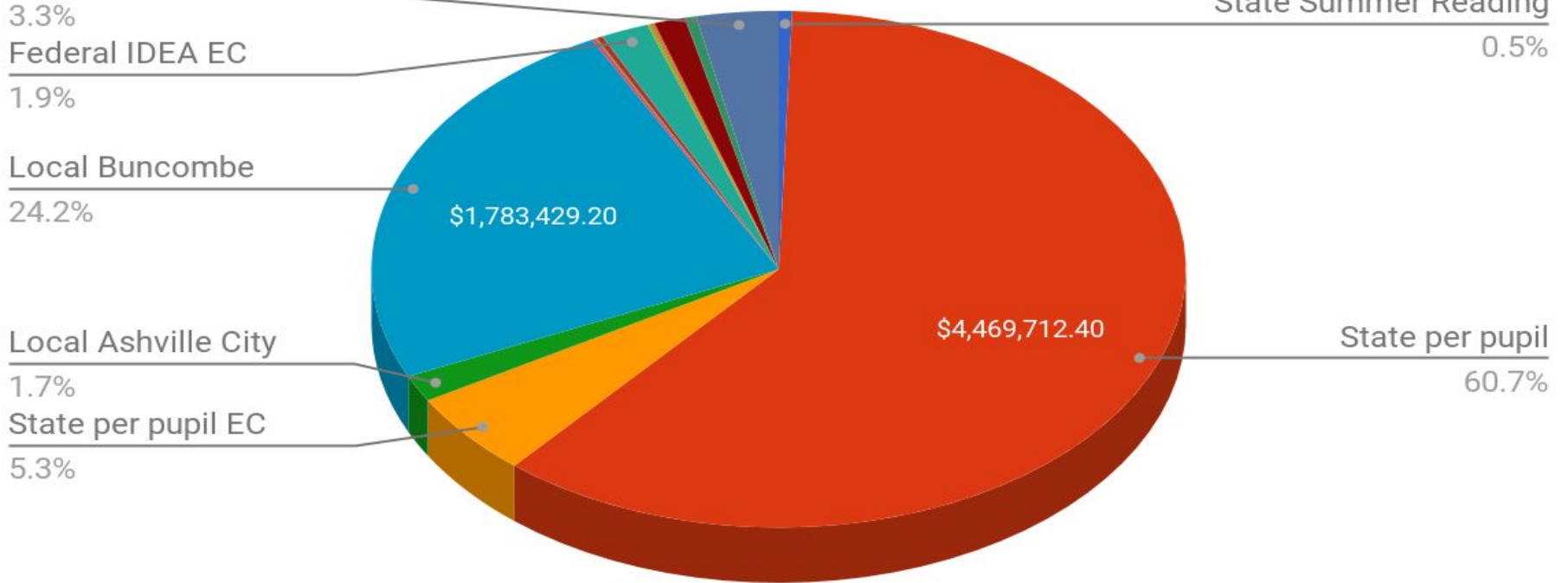
- ★ Goal to close on property in March 2018
- ★ Goal to open August 2019

## What About Next Year?

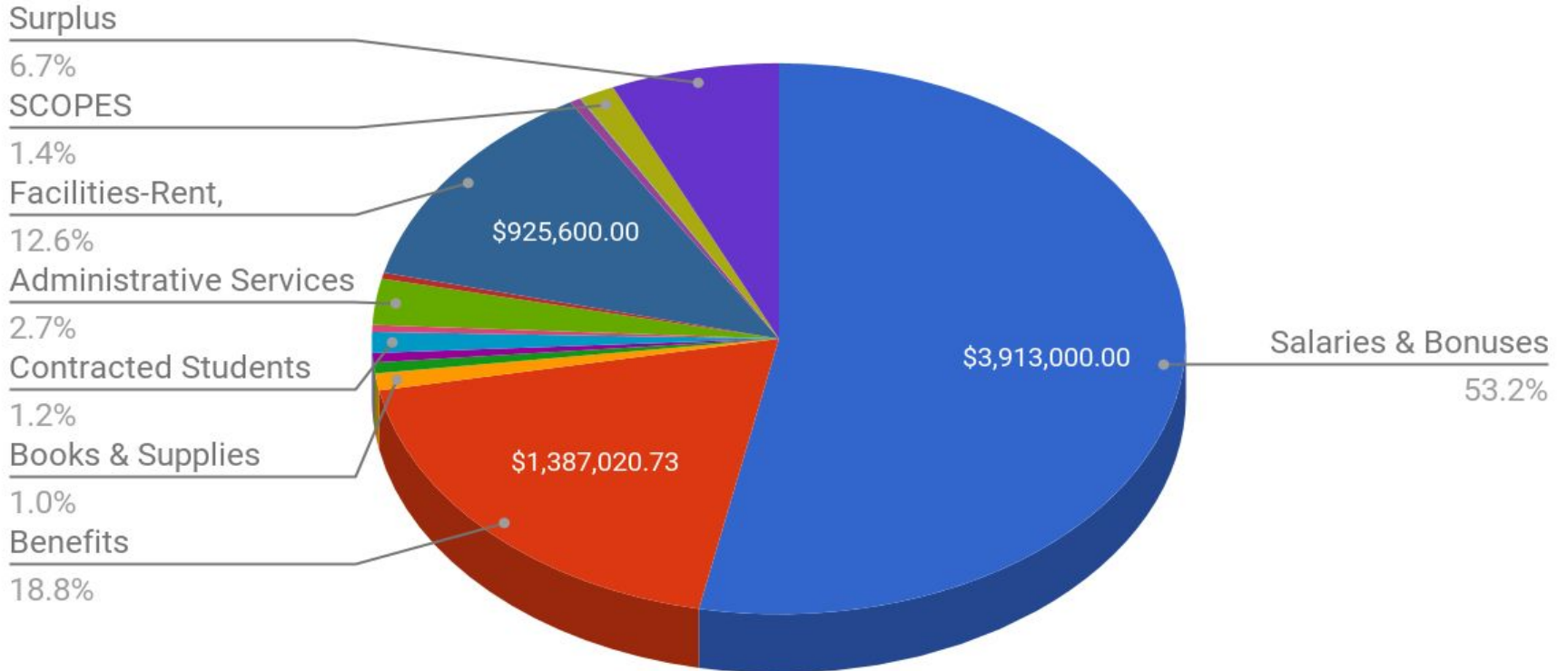
- ★ Open Enrollment Period for 2018-19 Jan 1 - March 31
- ★ Will utilize current space and continue to collaborate to use it as efficiently as possible

# 17.18 Revenue Overview

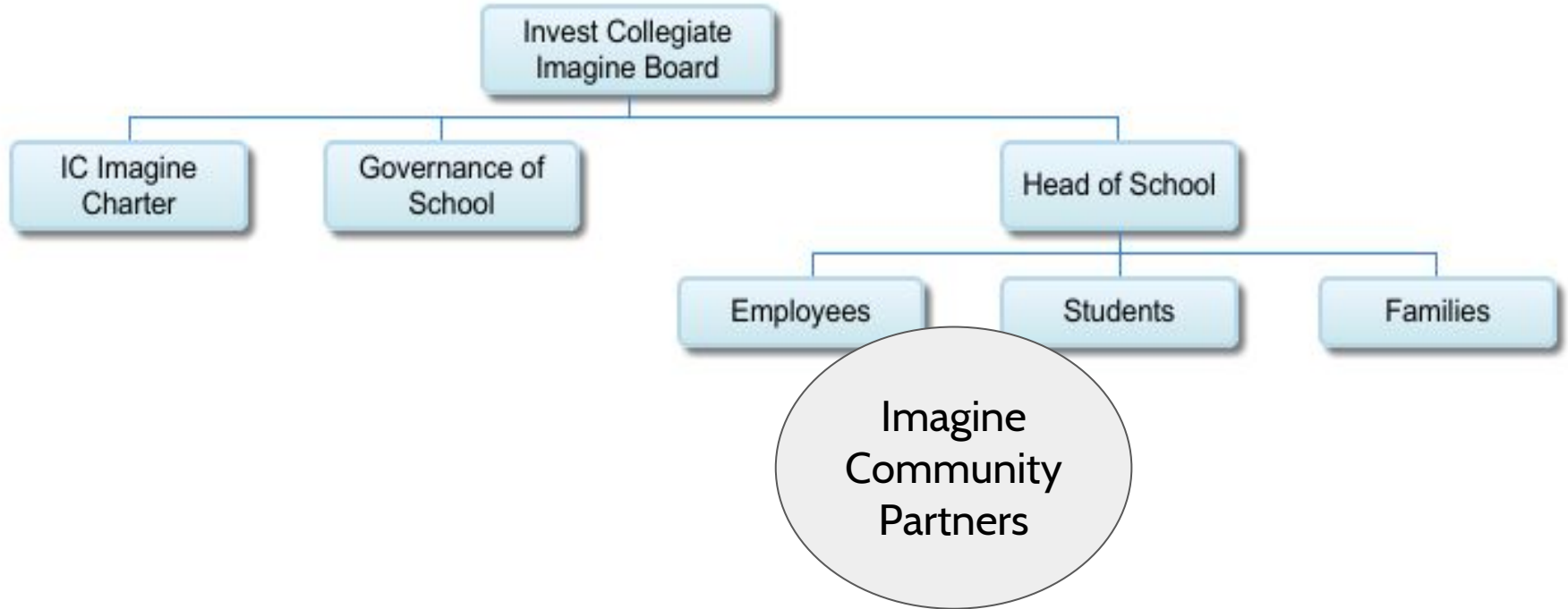
## SCOPES



# 17.18 Expenditure Overview



# Organization Structure



*The mission of Imagine Community Partners is to provide positive support and advocate for IC Imagine, its champions and collegiate leaders to ensure academic success and personal growth in all champions.*

# How is this done?

building community

coordinating volunteers

facilitating communication

raising funds

supporting the school

# Building Community

Mentor Families

Family Card

School Directory

Carpool List

Fall Festival

Collegiate Leader Appreciation

Grandparents Club

Early Release Jump Days

Middle School Bathrooms



# Coordinating Volunteers

Melissa Strong

Book Room

Box Tops

Collegiate Leader Appreciation

Lost & Found

Uniform Closet

Crayola Recycle

# Facilitating Communication

website

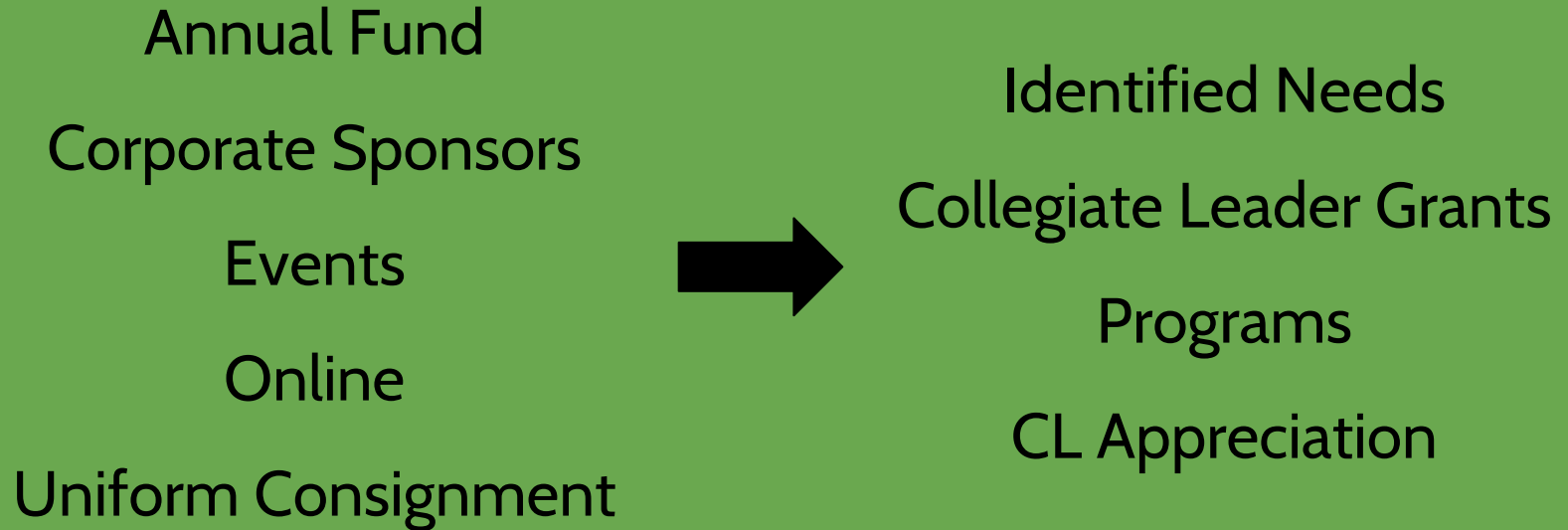
facebook

e-newsletters

email

“IC Imagine...” and #hashtags

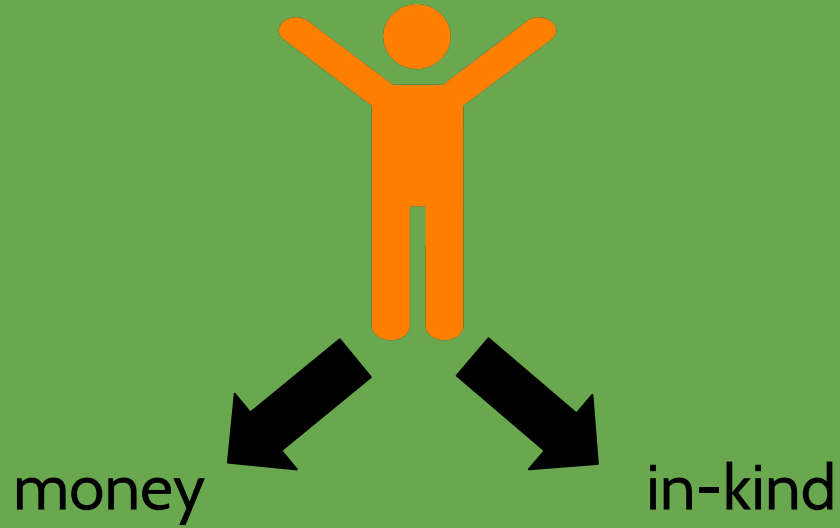
# Raising Funds & Supporting the School



# Raising Funds

Since ICP's inception, its fundraising goals have been:

- ★ to encourage financial support of IC Imagine,
- ★ to make giving easy,
- ★ to reduce fundraising expenses, and
- ★ to refrain from asking champions to fund raise.



**Both ways help our school!**

# Annual Fund 101



- ★ donations made in support of the school
- ★ bridge the gap that state and federal funding doesn't provide
- ★ one-time or recurring
- ★ general fund or specific areas
- ★ everyone can participate
- ★ every champion and CL benefits!



# What is the gap?

\$ 768 per champion

X 860 champions

-----

\$ 660,480



# How can I make a difference?

by making your most generous gift

*When everyone participates,  
many gifts (no matter the size!)  
can make a **BIG** impact!*





lots of little = **BIG** impact

\$ 25 /month  
X 12 months

-----

\$ 300  
X 600 families

-----

\$180,000



## It all adds up!

\$ 25/month ==> \$ 180K

\$ 50/month ==> \$ 360K

\$ 92/month ==> \$ 660K

**But what about the others ways  
I'm asked to support the school?**

Every bit of it helps.

Whether you give of your time or resources, or both,  
our beloved IC Imagine benefits!

**So what do the financials look like today?**

<u>INCOME</u>	
Adventure Club	1,094
Annual Fund	
Corporations	10,600
Families	21,410
Gifts In Kind	2,200
Band	4,924
Events & Fall Festival	4,688
Other Support	351
Sales Tax Refund	339
Spirit Wear	2,781
Uniform Closet	293
<u>TOTAL INCOME</u>	\$ 48,680

# Profit & Loss

## as of 10/31/17

<u>EXPENSES</u>	
Adventure Club	1,092
Investments	9,970
Operations	3,001
Sales Tax Paid	474
School Support	8,846
Social	2,414
Teacher Appreciation	381
<u>TOTAL EXPENSES</u>	\$ 26,178
<u>NET</u>	\$ 22,502

# Balance Sheet

## as of 10/31/17

<u>CHECKING</u>	
Operating	26,787
Paypal	2,000
<u>TOTAL CHECKING</u>	28,787
<u>ACCOUNTS REC.</u>	4,835
<u>TOTAL ASSETS</u>	\$ 33,622

<u>EQUITY</u>	
Adventure Club	266
Adv. Club MTB	500
Athletics	1,342
Benevolence	547
CL Appreciation	2,322
Clothing Closet	72
Community Garden	207
DI	45
Fine Arts	6,518
OG	270
Orgsonline	1,500
Recreation & PE	308

Spanish	926
Technology	200
Upper School	1,680
Reserve Fund	1,000
Unrestricted	15,777
<u>TOTAL EQUITY</u>	\$ 33,480

<u>LIABILITIES</u>	
Credit Card	142
<u>TOTAL LIABILITIES</u>	\$ 142

<u>TOTAL LIAB &amp; EQUITY</u>	\$ 33,622
--------------------------------	-----------

# Comments & Questions

**Adjourn**

*Thanks for coming and have a great Thursday!*